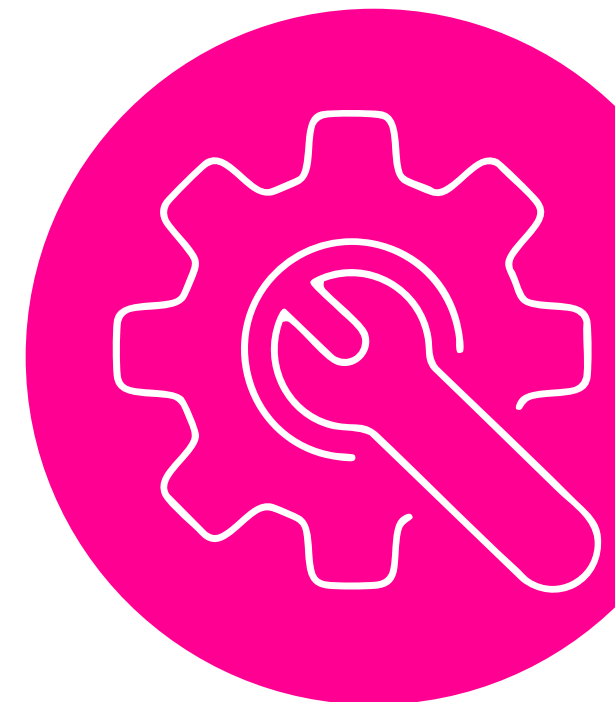


# Your Leader Cheat Sheet

Our new medical plans start January 1. To have coverage next year, employees must select a new plan October 15–31.



This will take about 5 minutes to complete. Try to set a timer and give it your full attention. Then, print it out or save it to your desktop for easy reference.



15-SECOND READ

## Key Dates

### October 1

Employees find out new medical plans are coming in our monthly newsletter.

### October 6–14

All employees are invited to an onsite or virtual information session.

### October 15–31

Employees select a new medical plan for 2026 during Annual Enrollment.

30-SECOND ACTION

## What You Need to Do

Add this to your calendar now for October 1.

### Copy/Paste:

**Event title:** 2026 Benefits Information Sessions

**Event notes:** Remind my team that Annual Enrollment is coming and send them to [acmebenefits.com](https://acmebenefits.com) to learn more about our new medical plans and sign up for an information session.

30-SECOND READ

## What You Need to Tell Your Team

We are introducing all new medical plans on January 1. To have coverage in 2026, you must select a new plan during Annual Enrollment, October 15–31. Visit our [acmebenefits.com](https://acmebenefits.com) for details. Log in to the enrollment site or use the mobile app to enroll.



**2-MINUTE AUDIO:** Scan here for an audio note with a little more detail, if you want it.

2-MINUTE GAME

## Make It Stick

Play this 2-minute [flashcard game](#) to help make sure you remember everything you need to know about the new medical plans.

## Need more?

Additional details and FAQs can be found [here](#).